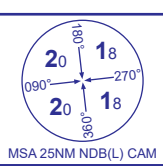
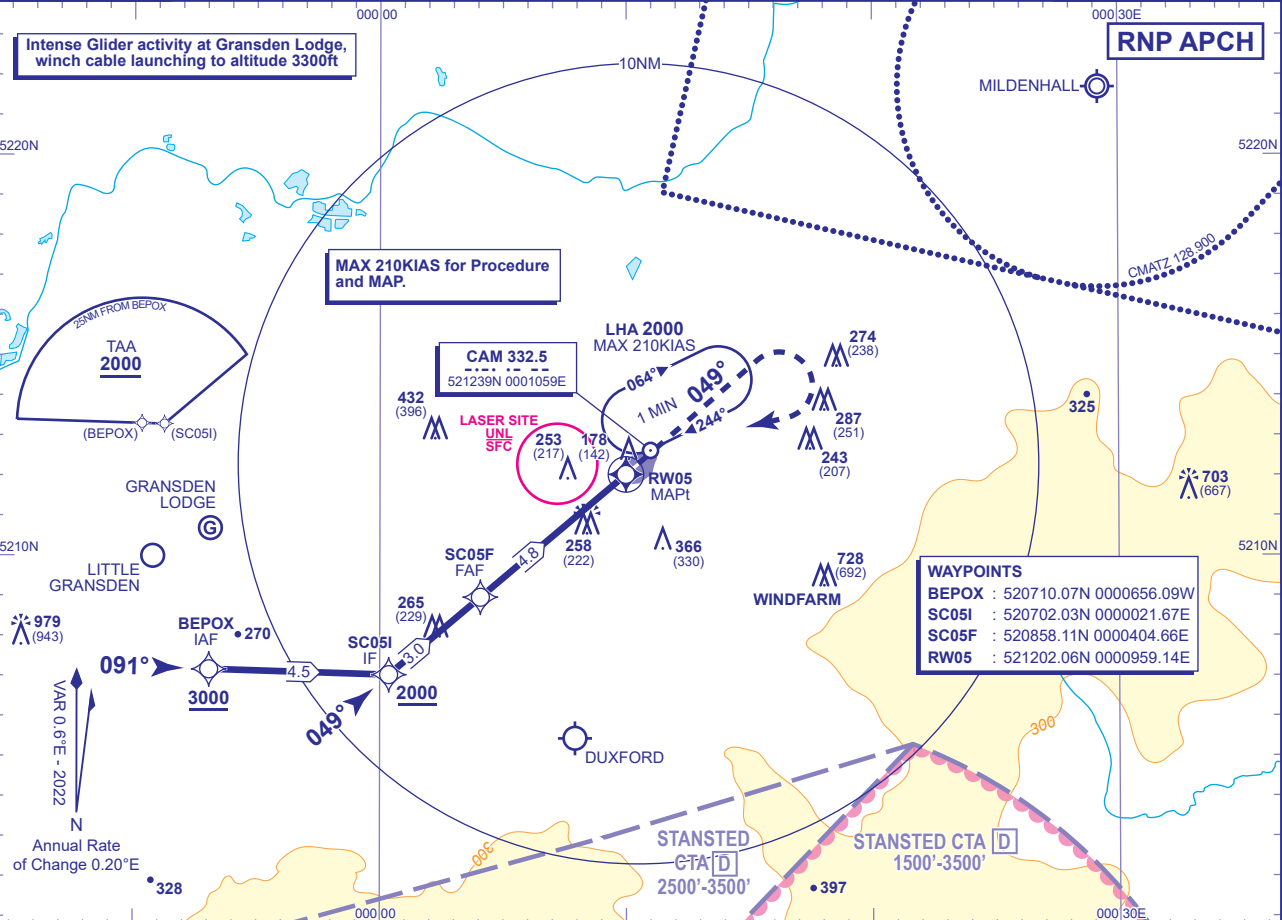


INSTRUMENT APPROACH CHART - ICAO

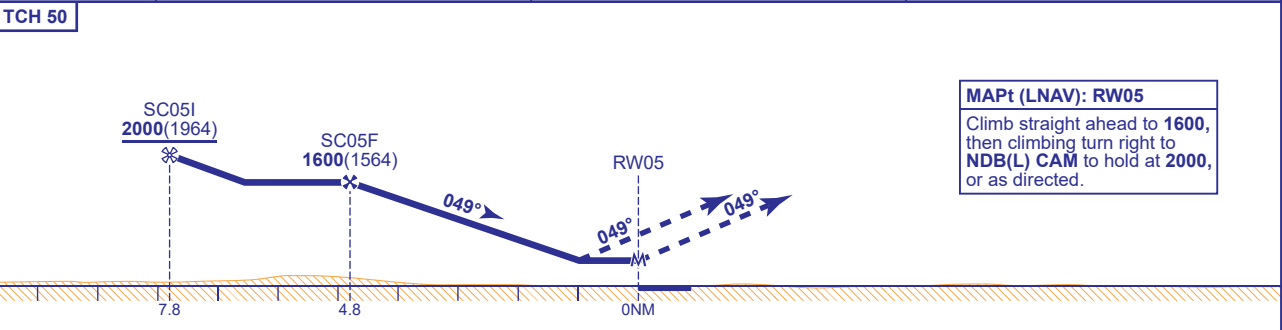
RNP  
RWY 05  
(ACFT CAT A,B,C,D)



APP 120.965	CAMBRIDGE APPROACH	AD ELEVATION 47	MIN TEMP -15°C TRANSITION ALTITUDE 6000
TWR 125.905	CAMBRIDGE TOWER	THR ELEVATION 36	
ATIS 134.605	CAMBRIDGE INFORMATION	OBSTACLE ELEVATION 979 AMSL (943) (ABOVE THR)	
		BEARINGS ARE MAGNETIC	



RECOMMENDED PROFILE Gradient 5.2%, 318FT/NM			
NM to RW05	4	3	2
ALT(HGT)	1360(1324)	1040(1004)	720(684)



Aircraft Category	A	B	C	D	Rate of descent	G/S KT	160	140	120	100	80
OCA (OCH)	LNAV/VNAV	660(624)	660(624)	660(624)		FT/MIN	850	740	640	530	420
	LNAV	660(624)	660(624)	660(624)							
VM(C)OCA (OCH AAL)	Total Area	660(613)	710(663)	810(763)	1050(1003)						

**NOTE**

- Aircraft will normally be required to hold not lower than 3000.
- RNP procedure is subject to approval from Cambridge ATC.
- Missed Approach Procedure uses conventional navigation aids and is not available without NDB(L) CAM.
- Intense glider activity and winch launching can be expected at Gransden Lodge Glider Site seven days a week during daylight hours. Pilots should avoid overflying the site on approach to Cambridge.